



# OAKLANDS FARM SOLAR PARK

Applicant: Oaklands Farm Solar Ltd

Environmental Statement

Chapter 11 – Figure 11.1 – 11.3

January 2024

Document Ref: EN010122/APP/6.1/Fig 11.1 – 11.3

Revision: -

Planning Act 2008

Infrastructure Planning (Application: Prescribed Forms and Procedure) Regulations 2009 - 5(2)(a)



# Oaklands Farm Solar Park - Environmental Statement Volume 2

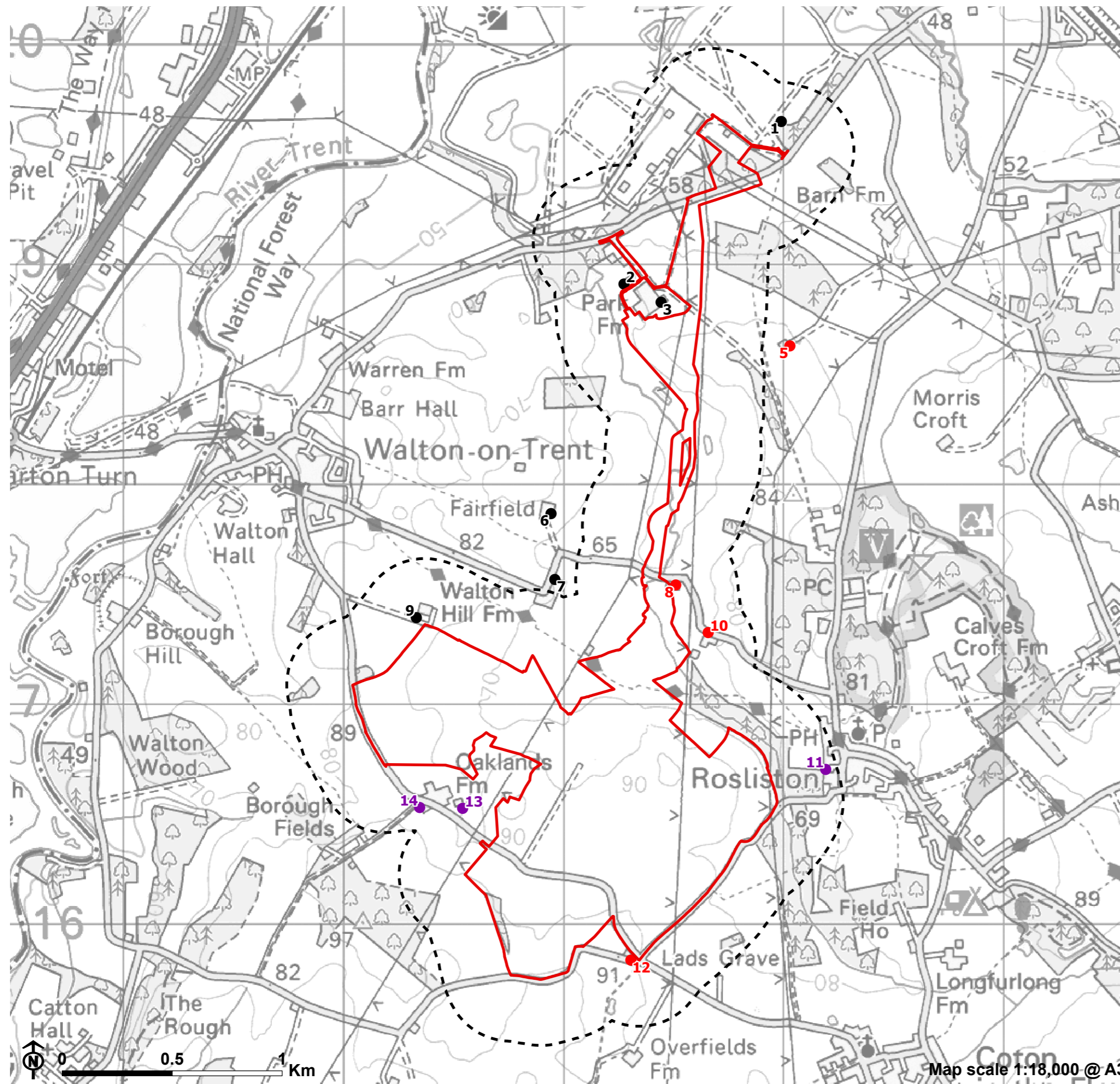
## Chapter 11: Noise Figures

**Final report**  
Prepared by LUC  
January 2024

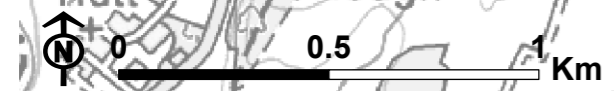




Figure 11.1: Survey measurement positions and noise receptors of interest



- Order Limits/ Site Boundary
- Study area
- Noise receptor
  - Noise sensitive receptor
  - Noise sensitive receptor and baseline evening noise monitoring location
  - Noise sensitive receptor and long-term baseline noise monitoring positions
- 1. Drakelow Park
- 2. Grove Lodge
- 3. Park Farm Cottages
- 4. Park Farm House
- 5. Spring Farm Cottage
- 6. Fairfields Farm
- 7. Old Barn Farm
- 8. Corner Farm
- 9. Walton Hill Farm
- 10. Walton Lane Farm / The Old Byre
- 11. Houses on north west edge of Rosliston
- 12. Ladsgrove Cottage
- 13. Twin Oaks House
- 14. Boroughfields & Pennyworth Cottage



Map scale 1:18,000 @ A3

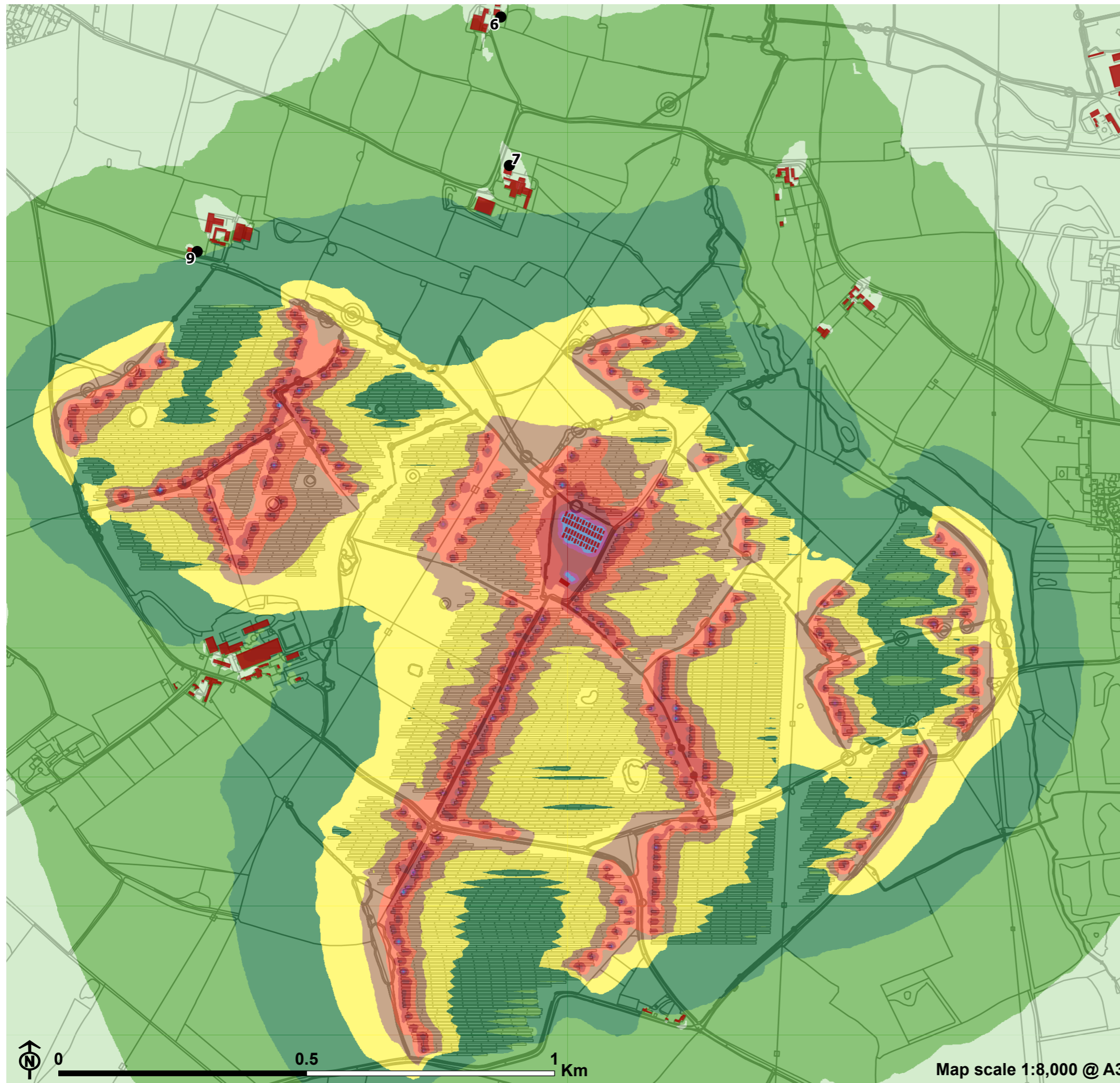
PINS reference: EN010122







Figure 11.2: Predicted worst-case daytime noise levels (at 1.5m above ground)



- Noise sensitive receptor
- 6. Fairfields Farm
- 7. Old Barn Farm
- 8. Corner Farm
- 9. Walton Hill Farm
- 10. Walton Lane Farm / The Old Byre
- 11. Houses on north west edge of Rosliston
- 12. Ladsgrave Cottage
- 13. Twin Oaks House
- 14. Boroughfields & Pennyworth Cottage

Day Level dB(A)

<30
>30-35
>35-40
>40-45
>45-50
>50-55
>55-60
>60-75
>65-70
>70-..

PINS reference: EN010122



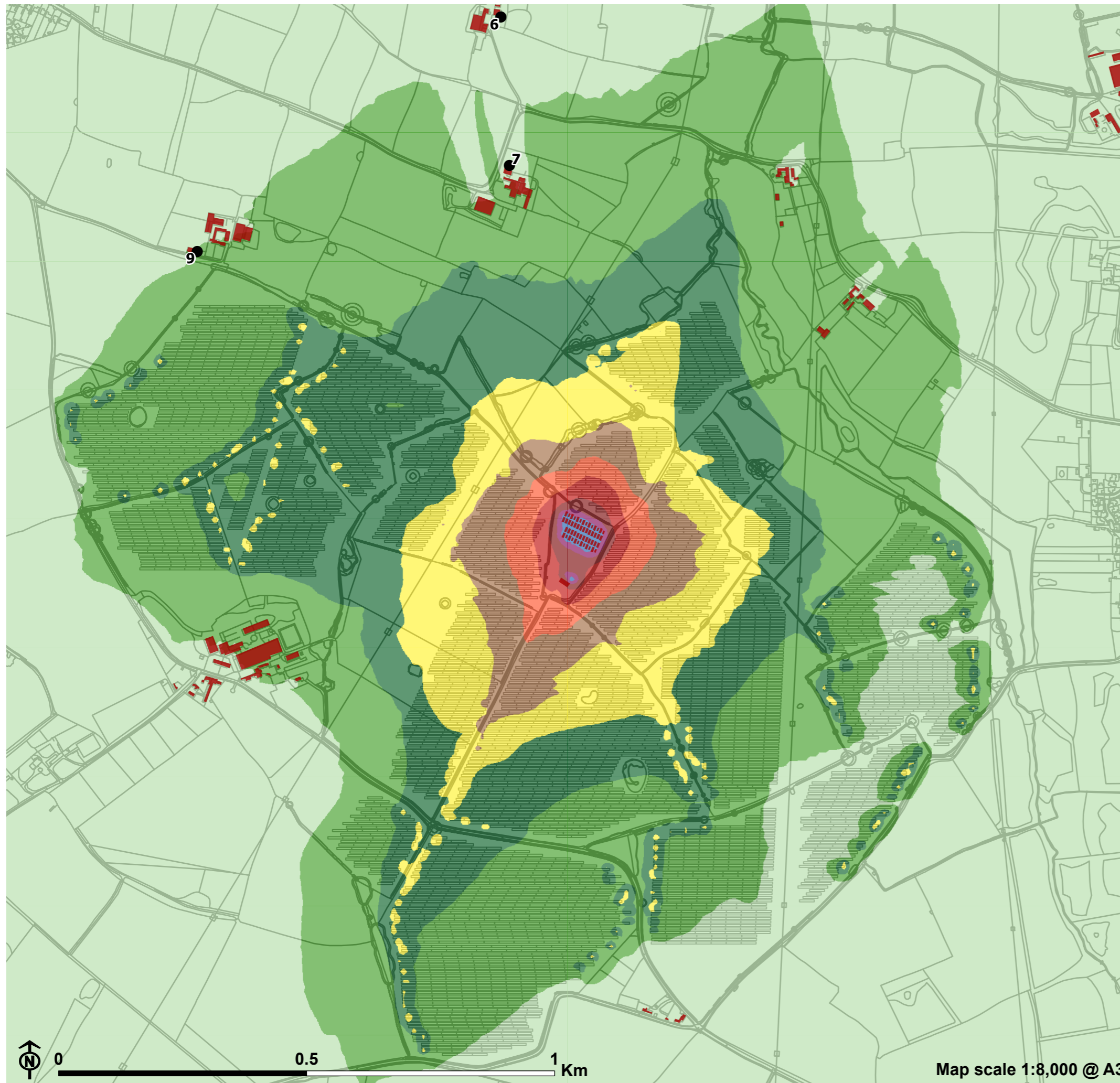


Figure 11.3: Predicted worst-case night-time noise levels (at 4.5m above ground)

- Noise sensitive receptor
- 6. Fairfields Farm
- 7. Old Barn Farm
- 8. Corner Farm
- 9. Walton Hill Farm
- 10. Walton Lane Farm / The Old Byre
- 11. Houses on north west edge of Rosliston
- 12. Ladsgrave Cottage
- 13. Twin Oaks House
- 14. Boroughfields & Pennyworth Cottage

Night Level dB(A)

- <img alt="light green swatch" data-bbox="731 455 741 465"/> >..-30
- <img alt="medium green swatch" data-bbox="731 471 741 481"/> >30-35
- <img alt="dark green swatch" data-bbox="731 487 741 497"/> >35-40
- <img alt="yellow swatch" data-bbox="731 503 741 513"/> >40-45
- <img alt="brown swatch" data-bbox="731 519 741 529"/> >45-50
- <img alt="orange swatch" data-bbox="731 535 741 545"/> >50-55
- <img alt="red swatch" data-bbox="731 551 741 561"/> >55-60
- <img alt="dark red swatch" data-bbox="731 567 741 577"/> >60-75
- <img alt="purple swatch" data-bbox="731 583 741 593"/> >65-70
- <img alt="blue swatch" data-bbox="731 599 741 609"/> >70-..



PINS reference: EN010122

